

**Neve** (www.nevedesigns.com)

**Trudy** und **Avery** aus der Boulevard Kollektion 2011



**Material:** 100 Prozent Baumwolle

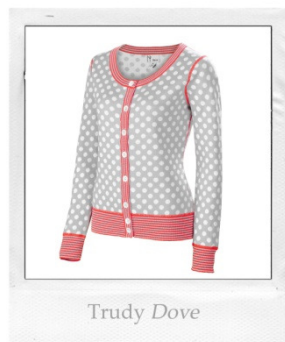
**Größen:** XS bis XXL

**Empf. VK Trudy:** 89,95 Euro

**Farbvariationen Trudy:** Dove - Taubengrau, Cherry - Kirschrot, Sprout - Sprossengrün, Night - Nachtblau, Ivory - Elfenbein

**Empf. VK Avery:** 119,95 Euro

**Farbvariationen Avery:** Dove - Taubengrau, Cherry - Kirschrot, Sprout - Sprossengrün, Night - Nachtblau, Black - Schwarz



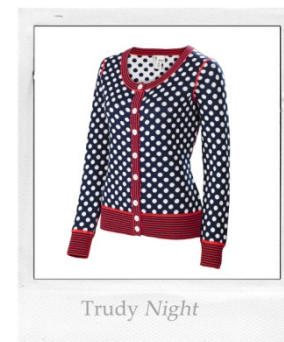
Trudy Dove



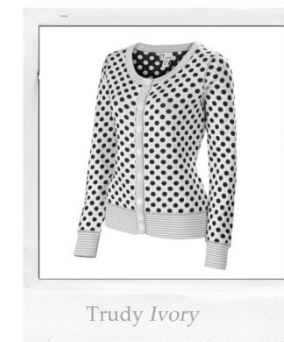
Trudy Cherry



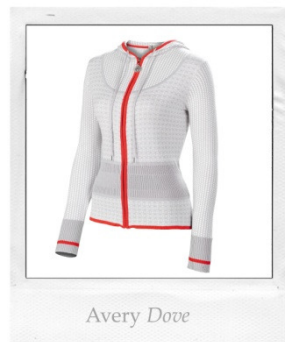
Trudy Sprout



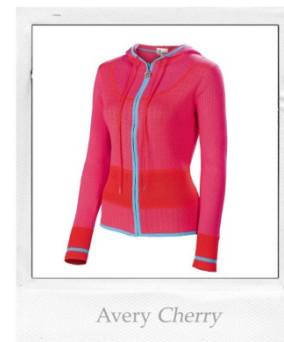
Trudy Night



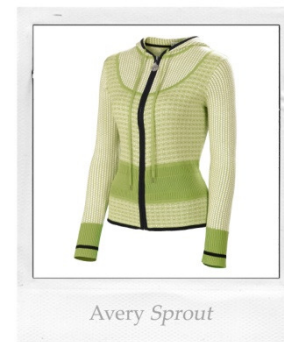
Trudy Ivory



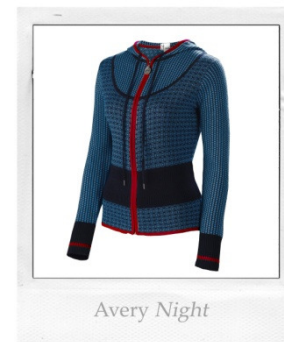
Avery Dove



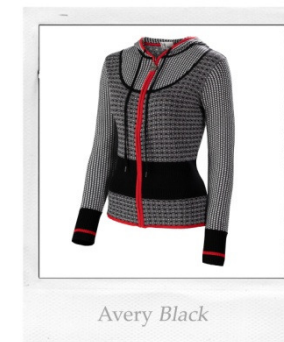
Avery Cherry



Avery Sprout



Avery Night



Avery Black